

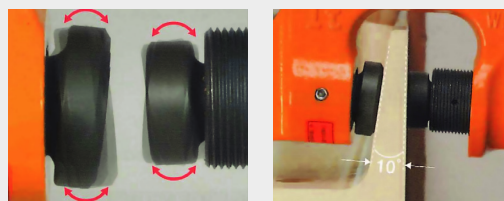
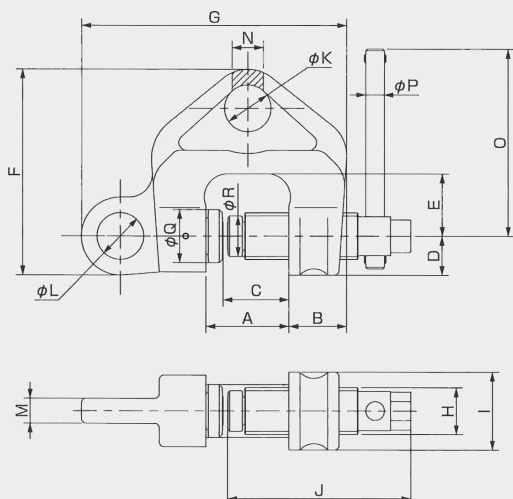
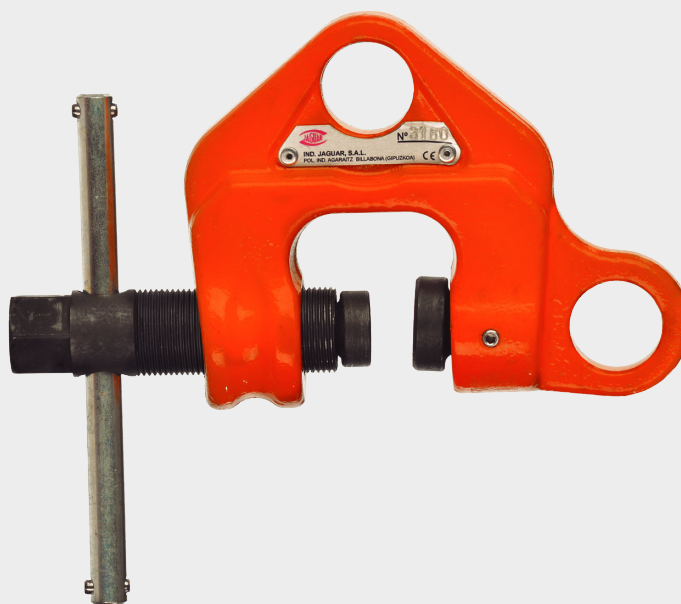
## WF MODEL

### SCREW CLAMPS

The "WF" Screw clamps are designed for use in vertical, horizontal as well as like an anchoring point.

#### Features:

- Easy to use.
- Light.
- The minimum load is 20% of the maximum workload.
- Double pivoting jaw, is always adapted to nonparallel faces and when the angle is not greater than 10°.



CODE	MODEL	MAIN DIMENSIONS (mm)																	
		A	B	C	D	E	F	G	H	I	J	ØK	ØL	M	N	O	ØP	ØQ	ØR
AGHUS050	WF-05	41	32	30,5	21	33	108	138	24	42	98	25	25	12	16	120	10	26	21
AGHUS100	WF-1.0	53,5	38	42,5	25	40	132	172	30	50	118	30	30	16	20	120	12	34	26
AGHUS200	WF-2.0	60	45	47,5	31	41	157	202	36	62	126	34	35	22	28	150	12	36	29
AGHUS300	WF-3.0	65,5	52	51,5	35	44	170	230	42	70	139	35	42	28	33	160	12	40	36
AGHUS500	WF-5.0	71	57	55,5	38	46	187	248	48	75	137	40	46	38	40	180	12	41	36

MODEL	CAPACITY (Kg)	APERTURE CAPACITY (mm)	WEIGHT (Kg)
WF-05	500	3-28	1.5
WF-1.0	1.000	3-40	2.9
WF-2.0	2.000	3-45	4.9
WF-3.0	3.000	6-49	7.2
WF-5.0	5.000	9-53	10

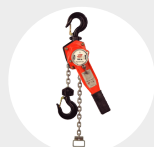
#### RECOMMENDED ACCESSORIES



MANUAL CHAIN HOISTS  
SERIES 630  
Pag. 20



ELECTRIC CHAIN HOISTS  
MODEL EC4  
Pag. 116



LEVER CHAIN HOISTS  
SERIES 900  
Pag. 26



WIRE ROPE PULLING HOISTS  
"TCH" STEEL  
Pag. 37