

# PGC MODEL

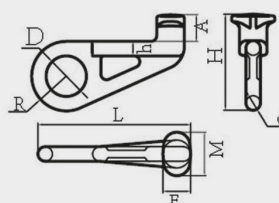
## G.80 CONTAINER HOOK, STRAIGHT, LEFT AND RIGHT TYPE



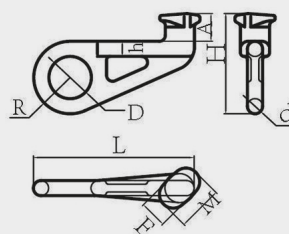
This type of hook allows lifting marine-type containers from any of the anchors.

**Note:** ask for configurations with slings and rockers, custom fabrications.

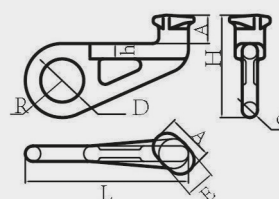
JAGUAR G.80 STRAIGHT TYPE CONTAINER HOOK											
CODE	WEIGHT (KG)	C.M.T. (T)	A	M	H	h	E	R	D	d	L
PGCR6000	4	12,5	46	75	166	25	48	60	70	25	265



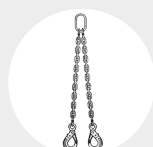
JAGUAR G.80 45° LEFT TYPE CONTAINER HOOK											
CODE	WEIGHT (KG)	C.M.T. (T)	A	M	H	h	E	R	D	d	L
PGCL6000	4	12,5	46	75	166	25	48	60	70	25	265



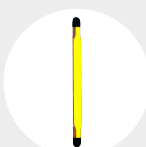
JAGUAR G.80 45° RIGHT TYPE CONTAINER HOOK											
CODE	WEIGHT (KG)	C.M.T. (T)	A	M	H	h	E	R	D	d	L
PGCD6000	4	12,5	46	75	166	25	48	60	70	25	265



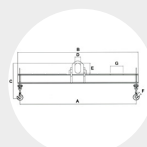
### RECOMMENDED ACCESSORIES



"DOL" SLING  
Pag. 84



FLAT SLINGS  
Pag. 94



JBA ADJUSTABLE ROCKERS  
Pag. 112