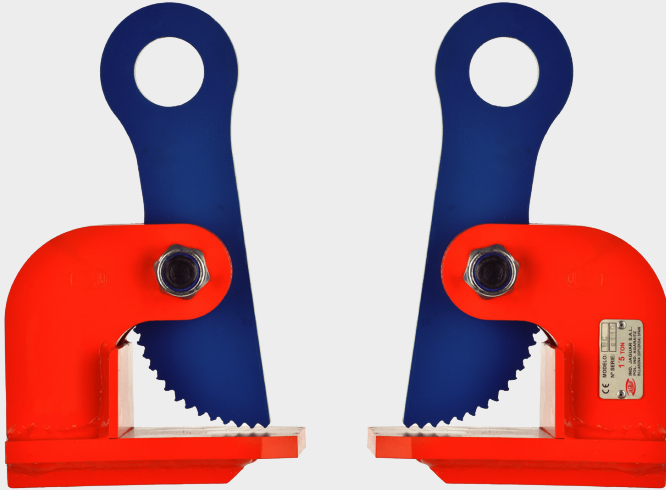


# D MODEL

## HORIZONTAL CLAMPS

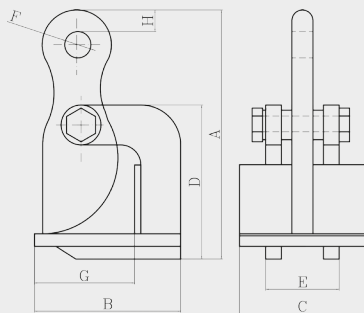
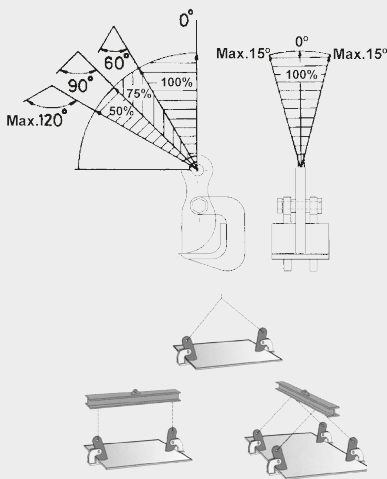


**Features:**

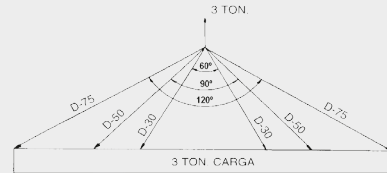
- These clamps are ideal for horizontal transport of steel plates and packages of steel plates.
- The difference between the "DC" and "DL" models is the opening capacity.
- All these come with powers between 1,500 and 10,000 kg.
- The hardness of the steel plates to be lifted should not be higher than HRC 37 (HB-345).
- The minimum workload should not be less than 10% of the maximum work load.
- To be supplied in two units set.

**Note:**

- The maximum workload is for the set of 2 units.
- If the load is big, it is best to use a lifting beam.

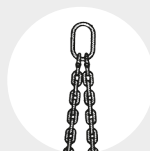


Always choose a higher capacity grip with an upper angle of more than 60°. Upper angle between 60° and 90°: 50% greater capacity. Upper angle between 90° and 120°: 100% greater capacity. e.g. [1] 3,000 Kg. Load with an upper angle of 60°: D-30 MODEL e.g. [2] 3,000 Kg. Load with an upper angle of 90°: D-50 MODEL e.g. [3] 3,000 Kg. Load with an upper angle of 120°: D-75 MODEL

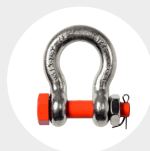


| CODE    | MODEL   | MAX WORK LOAD SET (KG.) | APERTURE CAPACITY (mm.) | WEIGHT OF SET (Kg.) | MAIN DIMENSIONS (mm) |          |        |          |     |     |     |    |     |    |    |
|---------|---------|-------------------------|-------------------------|---------------------|----------------------|----------|--------|----------|-----|-----|-----|----|-----|----|----|
|         |         |                         |                         |                     | A OPEN               | A CLOSED | B OPEN | B CLOSED | C   | D   | E   | F  | G   | H  | I  |
| AGC1000 | D-15-C  | 1.500                   | 1-30                    | 6,5                 | 113                  | 205      | 185    | 120      | 100 | 98  | 75  | 31 | 80  | 18 | 15 |
| AGC2000 | D-30-C  | 3.000                   | 1-50                    | 15                  | 155                  | 275      | 250    | 165      | 120 | 148 | 88  | 40 | 100 | 20 | 20 |
| AGC3000 | D-50-C  | 5.000                   | 1-70                    | 26                  | 205                  | 345      | 310    | 190      | 120 | 190 | 90  | 40 | 120 | 20 | 25 |
| AGC4000 | D-75-C  | 7.500                   | 1-100                   | 40                  | 245                  | 385      | 350    | 205      | 140 | 225 | 100 | 40 | 127 | 25 | 30 |
| AGC5000 | D-100-C | 10.000                  | 1-130                   | 62                  | 305                  | 495      | 450    | 220      | 150 | 295 | 110 | 45 | 127 | 27 | 30 |
| AGL1000 | D-15-L  | 1.500                   | 1-60                    | 7,5                 | 147                  | 246      | 225    | 120      | 100 | 133 | 75  | 31 | 80  | 18 | 15 |
| AGL2000 | D-30-L  | 3.000                   | 1-100                   | 18,5                | 215                  | 335      | 315    | 165      | 120 | 210 | 88  | 40 | 100 | 20 | 20 |
| AGL3000 | D-50-L  | 5.000                   | 1-125                   | 33                  | 250                  | 410      | 370    | 190      | 120 | 245 | 90  | 40 | 120 | 25 | 25 |
| AGL4000 | D-75-L  | 7.500                   | 30-130                  | 42                  | 275                  | 415      | 350    | 205      | 140 | 255 | 100 | 40 | 127 | 25 | 30 |
| AGL5000 | D-100-L | 10.000                  | 30-160                  | 65                  | 335                  | 525      | 450    | 220      | 150 | 325 | 110 | 45 | 127 | 27 | 30 |

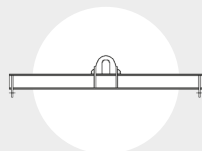
RECOMMENDED ACCESSORIES



SLING "DO"  
Pag. 84



SHACKLES  
Pag. 101



BEAM  
Pag. 112