

## D MODEL

### HORIZONTAL CLAMPS

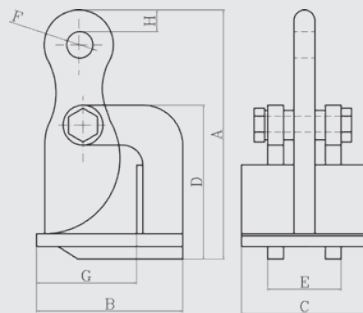
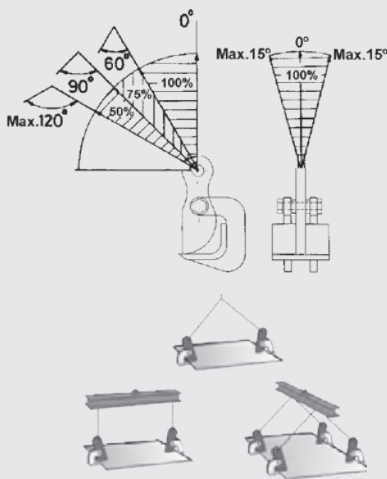


#### Features:

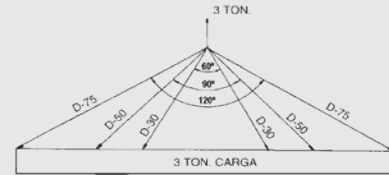
- These clamps are ideal for horizontal transport of steel plates and packages of steel plates.
- The difference between the "DC" and "DL" models is the opening capacity.
- All these come with powers between 1,500 and 10,000 kg.
- The hardness of the steel plates to be lifted should not be higher than HRC 37 (HB-345).
- The minimum workload should not be less than 10% of the maximum work load.
- To be supplied in two units set.

#### Note

- The maximum workload is for the set of 2 units.
- If the load is big, it is best to use a lifting beam.



Elija siempre una garra de mayor capacidad con un ángulo superior de más de 60°.  
 Ángulo superior entre 60° y 90°: Capacidad 50% mayor.  
 Ángulo superior entre 90° y 120°: Capacidad 100% mayor.  
 p.ej. (1) 3.000 Kg. de carga con un ángulo superior de 60°. MODELO D-30  
 p.ej. (2) 3.000 Kg. de carga con un ángulo superior de 90°. MODELO D-50  
 p.ej. (3) 3.000 Kg. de carga con un ángulo superior de 120°. MODELO D-75

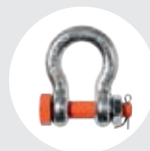


MODEL	MAX WORK LOAD SET (Kg.)	APERTURE CAPACITY (mm.)	WEIGHT OF SET (Kg.)	MAIN DIMENSIONS (mm)										
				A OPEN	A CLOSED	B OPEN	B CLOSED	C	D	E	F	G	H	I
D-15-C	1.500	1-30	6,5	113	205	185	120	100	98	75	31	80	18	15
D-30-C	3.000	1-50	15	155	275	250	165	120	148	88	40	100	20	20
D-50-C	5.000	1-70	26	205	345	310	190	120	190	90	40	120	20	25
D-75-C	7.500	1-100	40	245	385	350	205	140	225	100	40	127	25	30
D-100-C	10.000	1-130	62	305	495	450	220	150	295	110	45	127	27	30
D-15-L	1.500	1-60	7,5	147	246	225	120	100	133	75	31	80	18	15
D-30-L	3.000	1-100	18,5	215	335	315	165	120	210	88	40	100	20	20
D-50-L	5.000	1-125	33	250	410	370	190	120	245	90	40	120	25	25
D-75-L	7.500	30-130	42	275	415	350	205	140	255	100	40	127	25	30
D-100-L	10.000	30-160	65	335	525	450	220	150	325	110	45	127	27	30

#### RECOMMENDED ACCESSORIES



SLING "DO"  
Pag. 80



SHACKLES  
Pag. 94



BEAM  
Pag. 101