

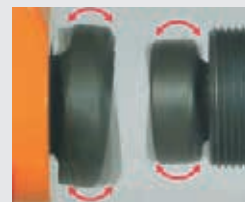
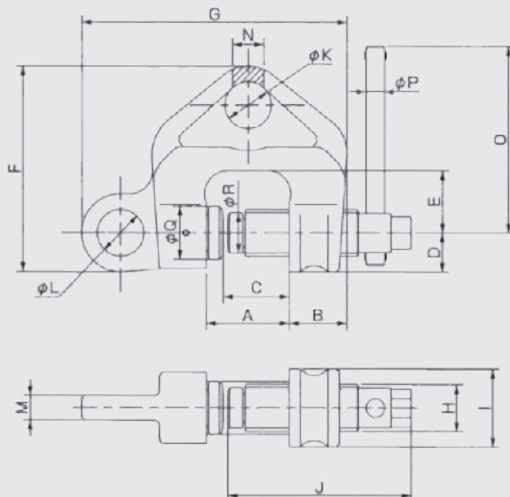
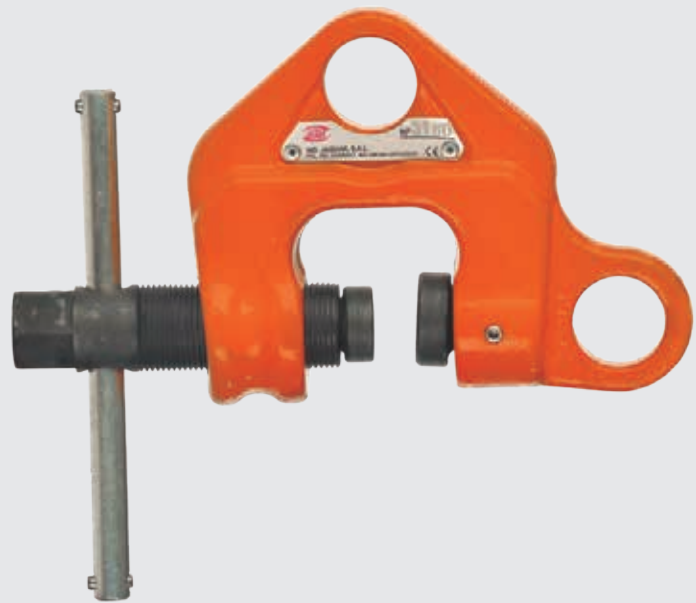
# WF MODEL

## SCREW CLAMPS

The "WF" Screw clamps are designed for use in vertical, horizontal as well as like an anchoring point.

### Features:

- Easy to use.
- Light.
- The minimum load is 20% of the maximum workload.
- Double pivoting jaw, is always adapted to nonparallel faces and when the angle is not greater than 10°.

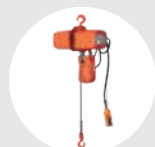


MODEL	MAIN DIMENSIONS (mm)																		
	A	B	C	D	E	F	G	H	I	J	Ø K	Ø L	M	N	O	Ø P	Ø Q	Ø R	
WF-05	41	32	30,5	21	33	108	138	24	42	98	25	25	12	16	120	10	26	21	
WF-1.0	53,5	38	42,5	25	40	132	172	30	50	118	30	30	16	20	120	12	34	26	
WF-2.0	60	45	47,5	31	41	157	202	36	62	126	34	35	22	28	150	12	36	29	
WF-3.0	65,5	52	51,5	35	44	170	230	42	70	139	35	42	28	33	160	12	40	36	
WF-5.0	71	57	55,5	38	46	187	248	48	75	137	40	46	38	40	180	12	41	36	

MODEL	CAPACITY (Kg)	APERTURE CAPACITY (mm)	WEIGHT (Kg)
WF-05	500	3-28	1.5
WF-1.0	1.000	3-40	2.9
WF-2.0	2.000	3-45	4.9
WF-3.0	3.000	6-49	7.2
WF-5.0	5.000	9-53	10



**MANUAL CHAIN HOISTS**  
SERIES 630  
Pag. 20



**ELECTRIC CHAIN HOISTS**  
MODEL EC4  
Pag. 106



**LEVER CHAIN HOISTS**  
SERIES 900  
Pag. 26



**WIRE ROPE PULLING HOISTS**  
"TCH" STEEL  
Pag. 29