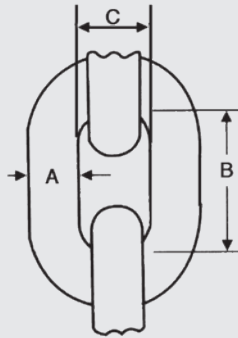
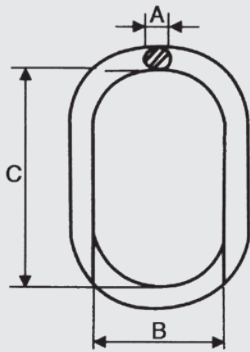


GRADE 80

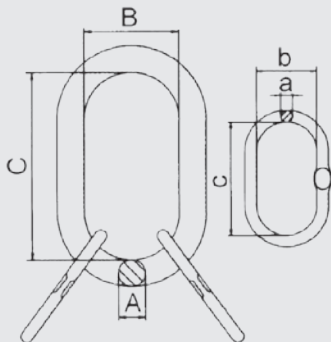
ACCESSORIES



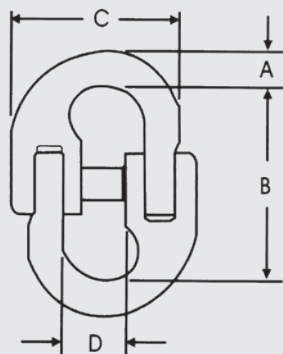
HIGH RESISTANCE CHAIN DIN EN-818-2 G.80					
SIZE (mm)	MWL TON.	MAIN DIMENSIONS (mm)			NET WEIGHT (Kg.)
		A	B	C	
6-8	1,12	6	18	8,50	0,80
8-8	2,00	8	24	11	1,40
10-8	3,15	10	30	14	2,20
13-8	5,30	13	39	18	3,70
16-8	8,00	16	48	22	5,70
20-8	12,50	20	57	26	7,80
22-8	15,00	22	66	30	10,90
26-8	21,20	26	78	35	15,20
32-8	31,50	32	96	43	23,00



MASTER LINK G.80					
MODEL	MWL TON.	MAIN DIMENSIONS (mm)			NET WEIGHT (Kg.)
		A	B	C	
AN76	1,60	13	60	110	0,40
AN87	2,12	16	60	110	0,55
AN108	3,15	18	75	135	0,80
AN1310	5,30	22	90	160	1,50
AN1613	8,00	26	100	180	2,30
AN1816	11,20	32	110	200	4,00
AN2018	14,00	36	140	260	6,50
AN2220	17,00	40	160	300	9,00
AN2622	21,20	45	180	340	13,00
AN3226	31,50	50	190	350	16,50
AN3632	45,00	56	200	400	23,50



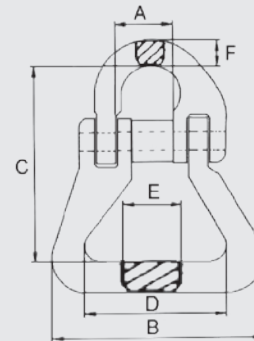
TRIPLE MASTER LINK G.80								
SIZE (mm)	MWL TON.	MAIN DIMENSIONS (mm)						NET WEIGHT (Kg.)
		A	B	C	A	B	C	
HA-06	2,36	18	77	133	14	26	56	1,30
HA-08	4,25	22	89	156	16	33	72	2,20
HA-10	6,70	25	99	180	18	41	87	3,20
HA-13	11,20	31	111	196	22	52	115	6,00
HA-16	17,00	36	131	261	25	65	140	9,50
HA-20	26,50	50	191	353	32	89	185	23,50
HA-22	31,50	51	191	354	37	106	180	25,40
HA-26	45,00	57	210	410	40	105	183	35,50
HA-32	74,80	70	252	420	50	116	200	59,60



CONNECTING LINK G.80						
SIZE (mm)	MWL TON.	MAIN DIMENSIONS (mm)				NET WEIGHT (Kg.)
		A	B	C	D	
6-8	1,12	8	42	37	16	0,14
8-8	2,00	9	59	48	21	0,21
10-8	3,15	13	70	60	28	0,40
13-8	5,30	15	87	76	30	0,60
16-8	8,00	20	106	92	37	1,20
20-8	12,50	24	117	106	45	1,80
22-8	15,00	27	138	130	51	2,80
26-8	21,20	32	156	154	59	4,40
32-8	31,50	38	197	187	68	8,30

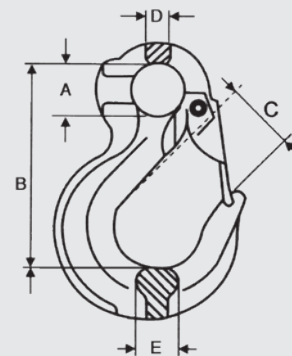
POLYESTER CONNECTING LINK G.80

SIZE (mm)	MWL TON.	MAIN DIMENSIONS (mm)						NET WEIGHT (Kg.)
		A	B	C	D	E	F	
6-8	1,12	16	60	55	35	18	8	0,20
8-8	2,00	20	62	64	37	23	9	0,30
10-8	3,15	26	66	80	37	30	13	0,50
13-8	5,30	30	87	94	51	36	16	1,10
16-8	8,00	36	107	120	64	45	22	2,00
20-8	12,50	44	127	134	78	50	23	2,90



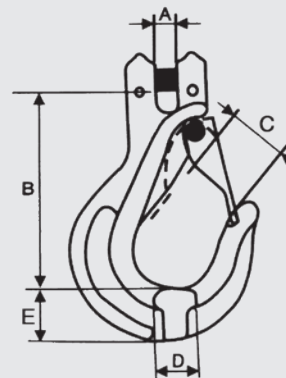
EYE SLING HOOK WITH LATCH G.80

SIZE (mm)	MWL TON.	MAIN DIMENSIONS (mm)					NET WEIGHT (Kg.)
		A	B	C	D	E	
6-8	1,12	20	79	24	9	14	0,30
8-8	2,00	25	97	29	11	17	0,40
10-8	3,15	38	118	30	15	21	0,90
13-8	5,30	42	150	39	20	27	1,80
16-8	8,00	50	183	47	23	35	2,90
20-8	12,50	62	222	51	27	48	6,40
22-8	15,00	62	235	75	33	43	9,00
26-8	21,20	63	272	82	37	61	13,70
32-8	31,50	87	350	103	39	65	19,30



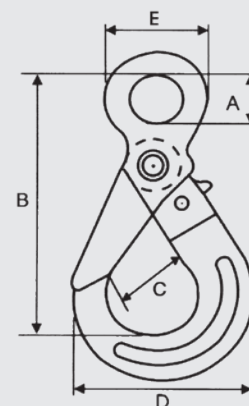
CLEVIS SLING HOOK WITH LATCH G.80

SIZE (mm)	MWL TON.	MAIN DIMENSIONS (mm)					NET WEIGHT (Kg.)
		A	B	C	D	E	
6-8	1,12	8	75	24	14	22	0,30
8-8	2,00	9	85	24	17	27	0,50
10-8	3,15	13	103	29	23	32	1,00
13-8	5,30	16	126	36	27	45	1,80
16-8	8,00	21	144	46	35	60	3,50
20-8	12,50	24	176	53	51	62	6,60



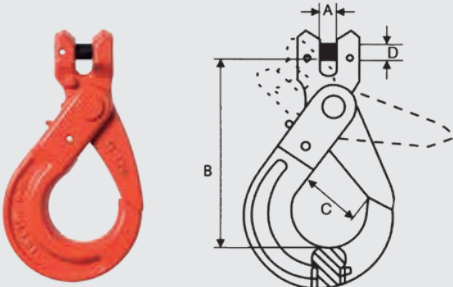
EYE SELF LOCKING SAFETY HOOK G.80

SIZE (mm)	MWL TON.	MAIN DIMENSIONS (mm)					NET WEIGHT (Kg.)
		A	B	C	D	E	
6-8	1,12	22	108	27	70	43	0,50
8-8	2,00	25	132	37	89	49	0,80
10-8	3,15	32	164	44	108	62	1,40
13-8	5,30	40	203	52	137	80	2,90
16-8	8,00	56	251	62	170	98	5,70
20-8	12,50	62	260	86	185	118	7,60
22-8	15,00	70	312	80	207	128	11,00
26-8	21,20	79	355	100	243	147	16,70
32-8	31,50	102	465	143	337	195	42,00

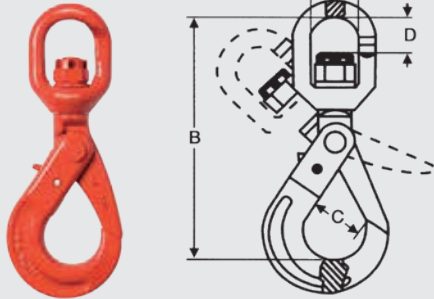


GRADE 80

ACCESSORIES

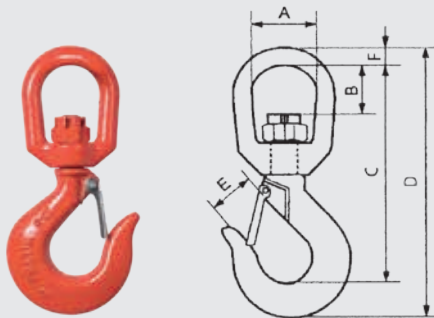


CLEVIS SELF LOCKING SAFETY HOOK G.80						
SIZE (mm)	MWL TON.	MAIN DIMENSIONS (mm)				NET WEIGHT (Kg)
		A	B	C	D	
6-8	1,12	9	94	27	8	0,50
8-8	2,00	9	108	37	9	0,80
10-8	3,15	13	145	44	13	1,50
13-8	5,30	15	175	52	16	3,10
16-8	8,00	18	210	62	20	6,10
20-8	12,50	25	230	86	25	7,90
22-8	15,00	25	270	80	29	11,30



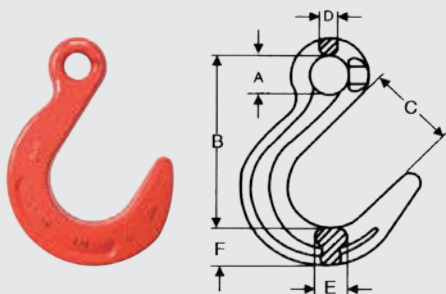
SWIVEL SELF LOCKING SAFETY HOOK G.80						
SIZE (mm)	MWL TON.	MAIN DIMENSIONS (mm)				NET WEIGHT (Kg)
		A	B	C	D	
6-8	1,12	33	152	27	25	0,70
8-8	2,00	35	183	37	27	1,10
10-8	3,15	42	217	44	36	2,00
13-8	5,30	49	260	52	40	3,70
16-8	8,00	60	325	62	53	7,10
20-8	12,50	72	352	86	58	9,80
22-8	15,00	96	455	80	93	17,20
26-8	21,20	121	525	100	113	29,80

Caution: Only turn the hook with no load.

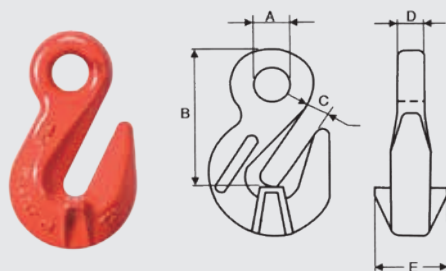


SWIVEL SLING HOOK WITH LATCH G.80								
SIZE (mm)	MWL TON.	MAIN DIMENSIONS (mm)						NET WEIGHT (Kg)
		A	B	C	D	E	F	
6-8	1,12	32	26	112	140	22	9	0,40
8-8	2,00	44	37	150	190	25	15	1,00
10-8	3,15	44	37	160	206	28	15	1,20
13-8	5,30	50	43	187	242	35	18	1,90
16-8	8,00	64	56	242	310	43	25	4,00
20-8	12,50	70	53	274	360	52	28	7,60
22-8	15,00	79	64	327	431	59	29	12,50

Caution: Only turn the hook with no load.



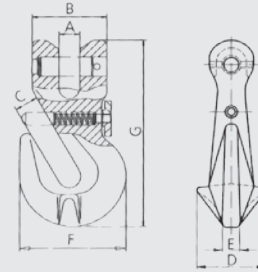
EYE FOUNDRY HOOK G.80								
SIZE (mm)	MWL TON.	MAIN DIMENSIONS (mm)						NET WEIGHT (Kg)
		A	B	C	D	E	F	
6-8	1,12	18	118	62	12	24	31	1,00
8-8	2,00	18	118	62	12	24	31	1,00
10-8	3,15	22	146	75	17	33	38	2,00
13-8	5,30	27	173	87	19	38	44	3,10
16-8	8,00	32	198	98	19	45	53	5,10
20-8	12,50	37	230	111	26	57	65	9,10
22-8	15,00	44	258	124	29	60	68	11,70



EYE SHORTENING HOOK G.80							
SIZE (mm)	MWL TON.	MAIN DIMENSIONS (mm)					NET WEIGHT (Kg)
		A	B	C	D	E	
6-8	1,12	14	45	8	9	22	0,10
8-8	2,00	16	59	10	9	30	0,20
10-8	3,15	20	79	13	14	46	0,60
13-8	5,30	26	99	16	16	57	1,30
16-8	8,00	30	102	19	19	71	2,00
20-8	12,50	36	130	22	22	93	4,80
22-8	15,00	44	160	27	28	90	7,40
26-8	21,20	44	184	28	35	100	10,00
32-8	31,50	55	230	37	42	113	18,00

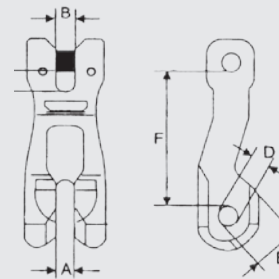
DIRECT CONNECTION SHORTENING HOOK WITH BOLT G.80

SIZE (mm)	MWL TON.	MAIN DIMENSIONS (mm)							NET WEIGHT (Kg)
		A	B	C	D	E	F	G	
6-8	1,12	8	32	8	26	6	43	75	0,20
8-8	2,00	9	35	11	33,50	11	50	89	0,33
10-8	3,15	12	45	13	46	12	70	126	0,88
13-8	5,30	15	53	16	57	13	96	163	1,85
16-8	8,00	18	69	19	72	17	112	183	3,24



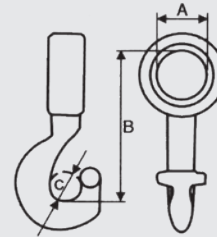
CHAIN CLUTCH G.80

SIZE (mm)	MWL TON.	MAIN DIMENSIONS (mm)						NET WEIGHT (Kg)
		A-B	C	D	E	F		
6-8	1,12	7	8	7	14	45	0,30	
8-8	2,00	9	11	11	20	64	0,50	
10-8	3,15	12	13	13	22	87	1,00	
13-8	5,30	16	16	16	32	114	2,00	
16-8	8,00	20	20	21	38	135	3,50	
20-8	12,50	22	25	24	47	151	4,30	
22-8	15,00	24	28	27	57	185	7,80	



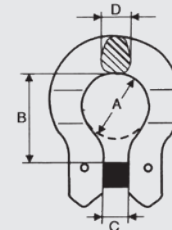
CHOKER HOOK G.80

SIZE (mm)	MWL TON.	MAIN DIMENSIONS (mm)			NET WEIGHT (Kg)
		A	B	C	
8-8	2,00	30	90	17	0,40
10-8	3,15	39	116	21	0,70
13-8	5,30	51	143	27	1,50
16-8	8,00	65	180	32	3,20



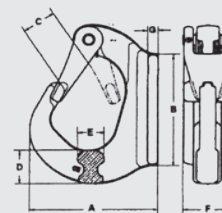
OMEGA LINK G.80

SIZE (mm)	MWL TON.	MAIN DIMENSIONS (mm)				NET WEIGHT (Kg)
		A	B	C	D	
8-8	2,00	22	34	10	11	0,20
10-8	3,15	31	40	12	16	0,30
13-8	5,30	40	54	16	20	0,70
16-8	8,00	48	61	18	26	1,10



HOOK TO BE WELDED (EXCAVATOR) G.80

SIZE (mm)	MWL TON.	MAIN DIMENSIONS (mm)							NET WEIGHT (Kg)
		A	B	C	D	E	F	G	
GE-2	2,00	91	80	26	24	20	34	7	0,80
GE-3	3,00	106	115	30	30	24	36	9	1,20
GE-5	5,00	132	159	36	45	28	44	10	2,50
GE-8	8,00	133	164	31	51	40	53	16	3,50
GE-10	10,00	166	200	48	55	39	56	20	5,60



HOOKS

SIZE (mm)	MWL TON.	MAIN DIMENSIONS (mm)				NET WEIGHT (Kg)
		A	B	C	D	
S-10	0,15	10	115	28	28	0,15
S-12	0,25	12	153	38	38	0,30
S-14	0,35	14	190	50	50	0,50
S-16	0,50	16	230	63	63	0,80
S-20	0,75	20	267	76	76	1,50
S-22	1,00	22	305	88	88	2,00
S-26	1,30	26	331	100	100	3,20
S-28	1,50	28	380	115	115	4,20
S-32	2,00	32	407	127	127	6,00



GRADE 80

ACCESSORIES



Care & Maintenance



Maintenance

Periodic inspection should be done, based on the application conditions, at regular intervals at least once a year.

The following points should be taken into account.

- Chains with deformed links, with fractures or cracks should be removed along with any accessory deformed master rings, open hooks and other components showing signs of wear.
- Wear on the chain and the components should not exceed 10% of the original dimensions. Wearing of chain link shall be maximum 10%, it is defined as the reduction of the material diameter measured in both directions.

• Overloaded chain slings should be withdrawn from use; the maximum permitted chain lengthening is 5% and the maximum increase allowed in the hook opening is 10%. Beyond these points, they should be withdrawn from use.

Care

- Keep a record of all slings in use.
- Make sure that the chain is free, ie it has no knots or twists.
- The chain slings can only be shortened using a shortening hook.
- If the load has sharp edges, protect it appropriately.
- Centre the load on the hook, never load on the hook tip.
- Always use the right sized sling for the corresponding load, do take into account the angle and possibility of an unequal load.
- The main ring should move freely in the crane hook.
- Always avoid tugging when raising loads.
- Never let the load fall on the chain.

